

Contractor: Plastering Plus

Weather: Clear Skies

| | |
|---|---|
| 1. Contractor: (Work performed, location, any lower tier subs and their scope of work) | |
| Base Work: | (2) Scaffold, Debris Net, Scaffold Ties, Weather protection layout, Daily Cleanup (1) Materials procurement, Documentation, Daily reporting, Site Supervisor, Safety checks (2) Start Demo, hook up vacuums, find best method and tool for job. |
| Off Site: | (1) Safety check tools, Unload debris from previous working day. |
| Allowance Work: | |
| 2. Description of work completed today: | |
| .Phase 1: | Install Temporary Weather Protection and Shrink Wraps 75% Protect inside 70% Remove railings, Stair Treads, Misc 100% Demolition and Demo Containment 20% Remove Sheathing 5% |
| Phase 2 | N/A |
| Phase 3 | N/A |
| 3. Verbal Instructions or Comments: (Input / conversations with other subs) | |
| Walked and drove within ¼ mile radius to check on noise. Noise appears to be at acceptable levels. | |
| 4. ACTION ITEMS: Schedule / Paperwork / Coordination Items: (New, prior, resolutions, RFI's) | |
| OPEN: (Customer) | Need temporary signage to assist tenant |
| OPEN: (Plastering Plus) | Scheduling Electrician to remove signage for early next week. |
| 5. Remarks: | |
| Vibration from Demo is within acceptable levels. Brenan monitored L1 area throughout the night. Demo is going slower than we hoped. Adding more manpower next week. | |
| 6. Look Ahead: (Next day): | |
| Demo Activities, Shrink Wraps, Temporary Weather Protection, Remove sheathing, Code and Plan review | |

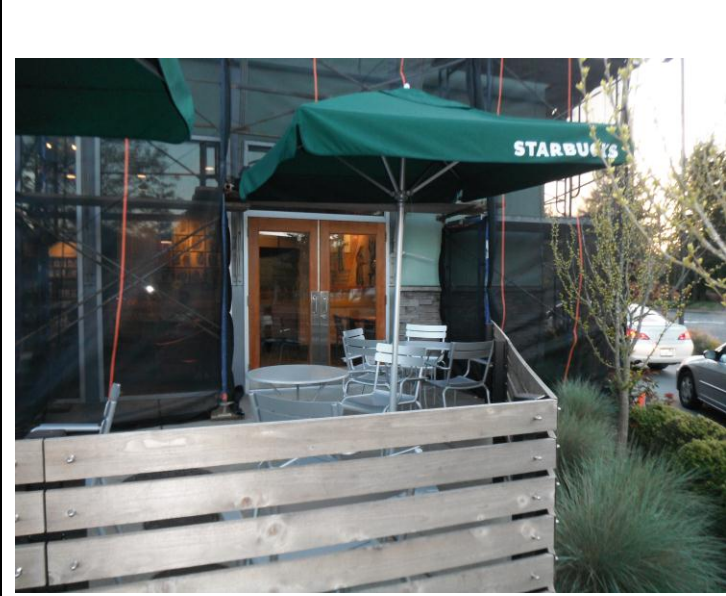
Brenan Filippini

Name: _____ Signature: _____ Date: _____



Drive through side from street with shrink wrap installed

Front elevation from street



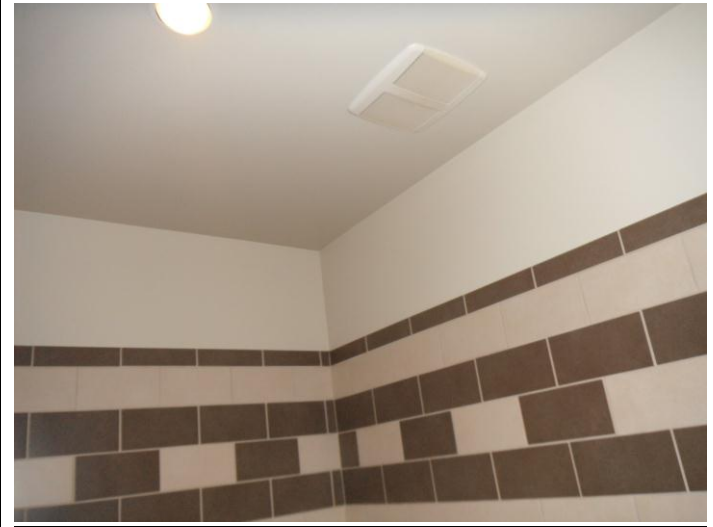
Entryway Scaffold setup typical. Netting wrapped inside to wall.

Construction view from Entry. "COFFEE" sign is leaving next week.



Removing Existing Weather Barrier.

2nd layer of Dens Glass sheathing



Stucco Demo'd and some sheathing removed

Interior Bathroom shot L1 Women's.



This COFFEE portion of the sign will be removed next week



These signs on South Elevation will be moved next week



Metal panel removed to facilitate work. Salvaged materials stored inside L2



Decking boards removed and stored inside L2 to facilitate work